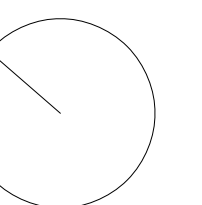
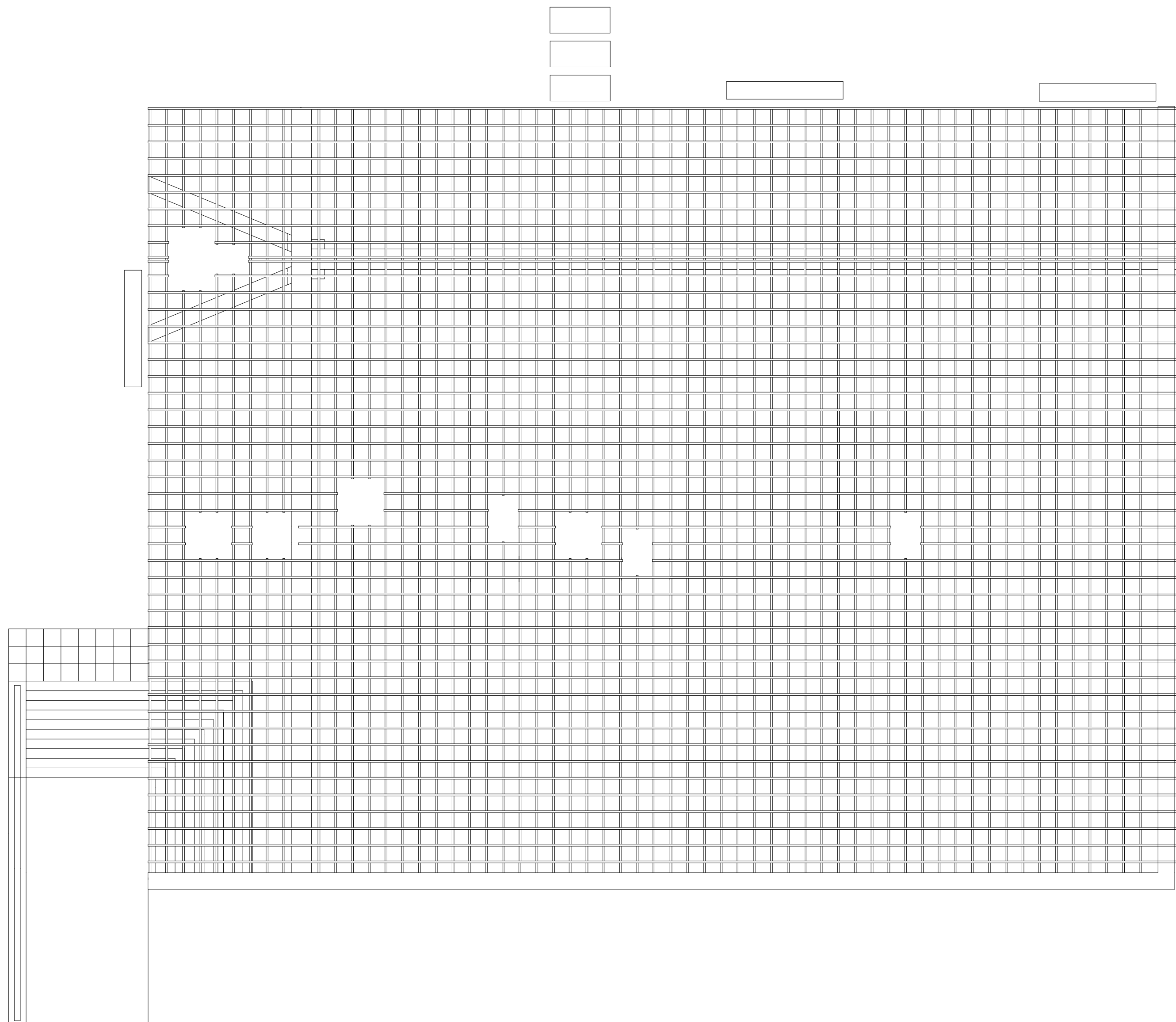


SVERRE FEHRN, NORDIC PAVILION, VENICE, 1962  
LAGEPLAN, MASSSTAB 1:200

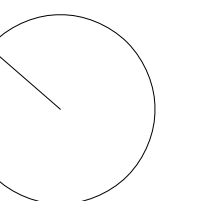
Nathalie Feile, Hanna Maier, Anna Merk, Luis Schönemann, Frederik  
Wulfrath

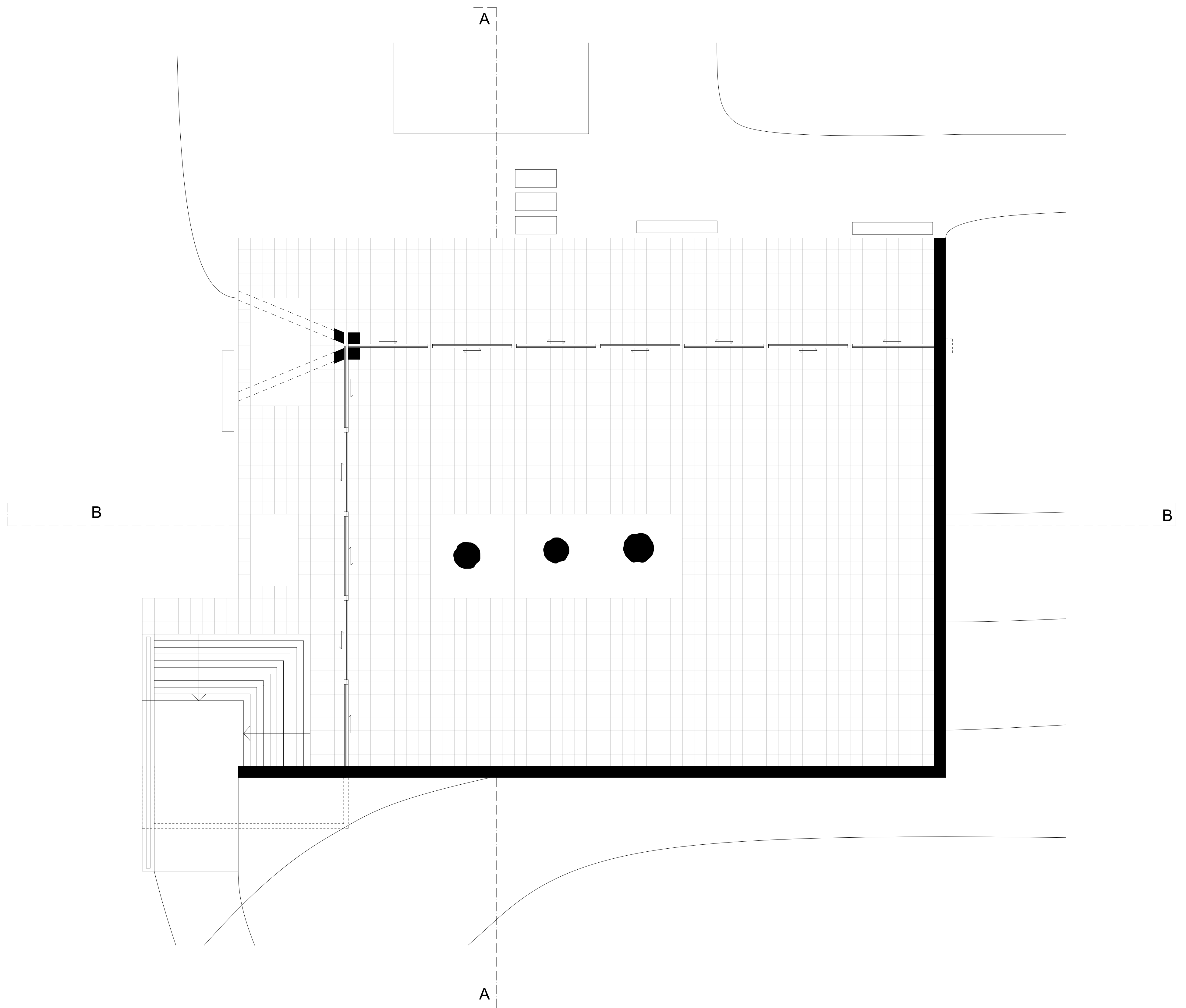




SVERRE FEHRN, NORDIC PAVILION, VENICE, 1962  
DACHAUFSICHT, MASSSTAB 1:100

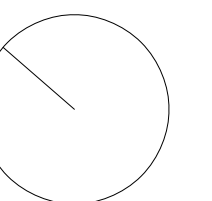
Nathalie Feile, Hanna Maier, Anna Merk, Luis Schönemann, Frederik  
Wulfrath

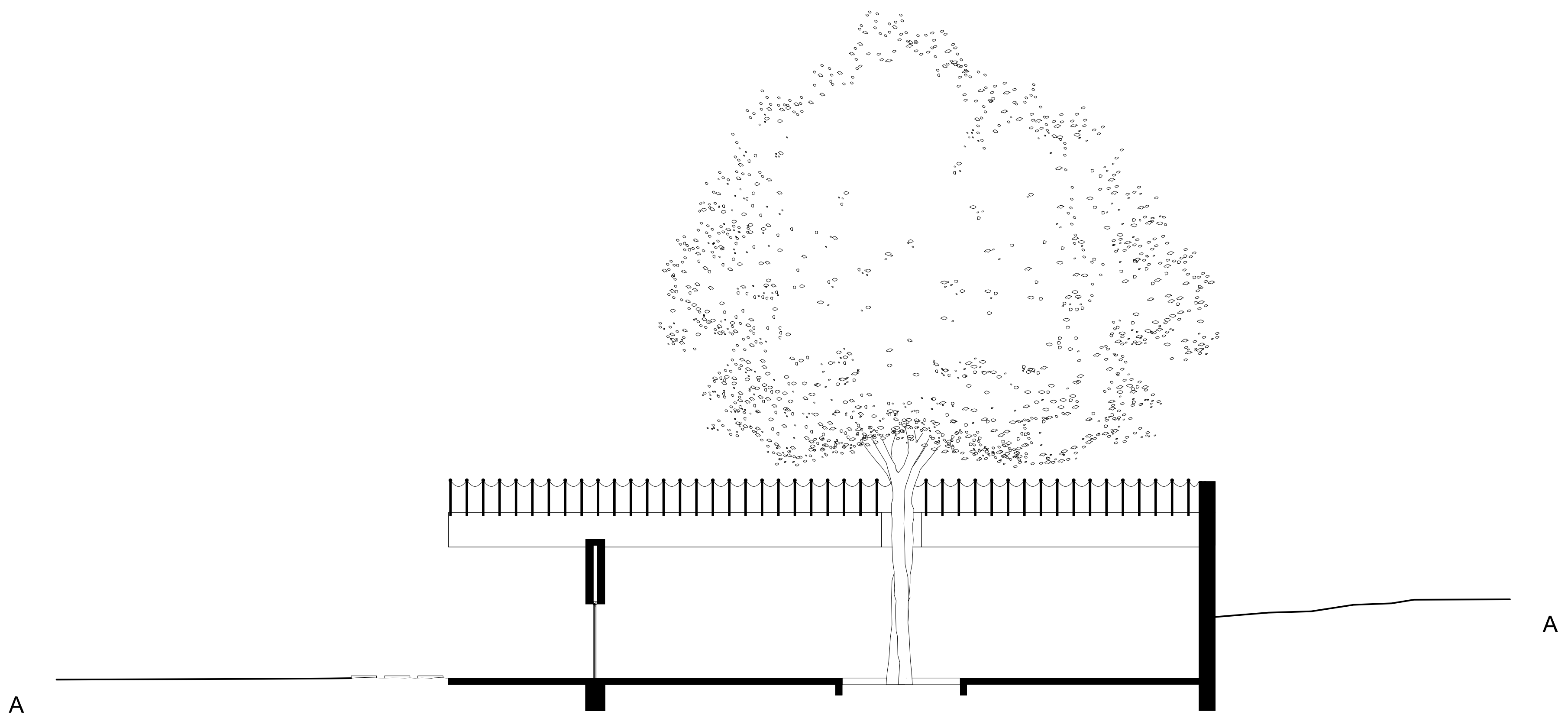




SVERRE FEHRN, NORDIC PAVILION, VENICE, 1962  
GRUNDRISS, MASSSTAB 1:100

Nathalie Feile, Hanna Maier, Anna Merk, Luis Schönemann, Frederik  
Wulfrath





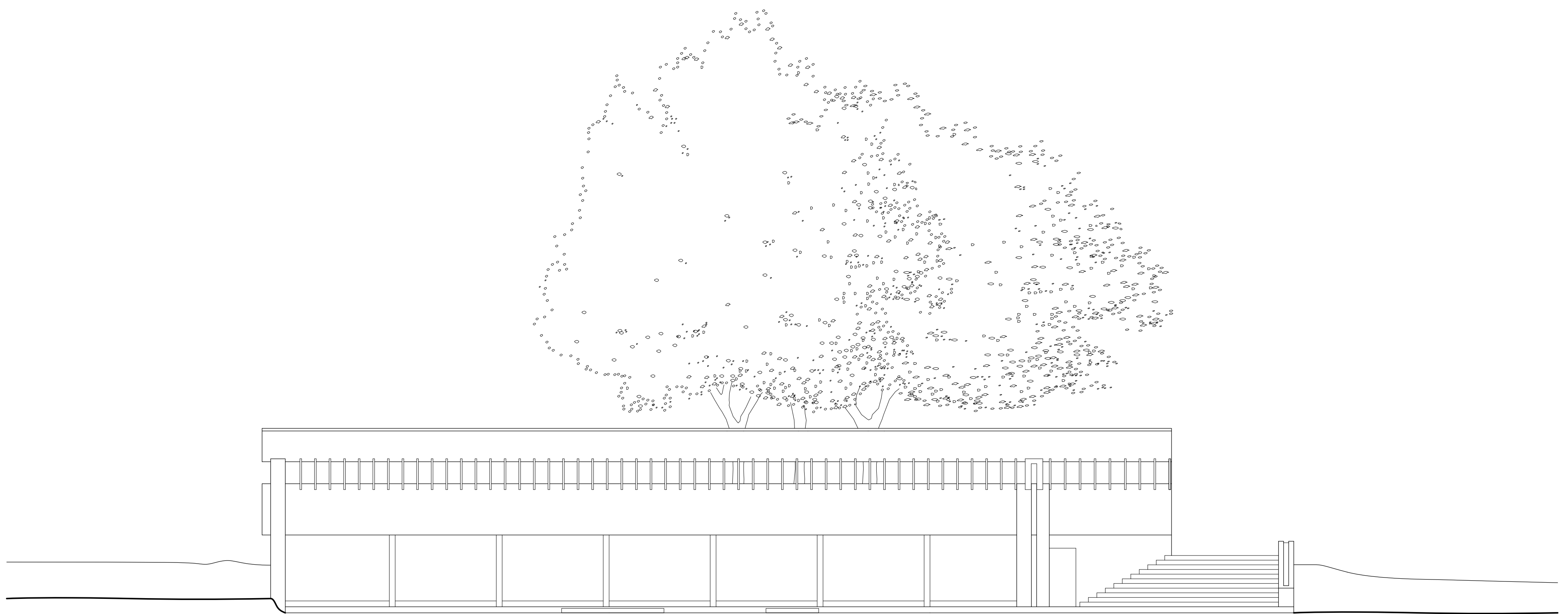
SVERRE FEHRN, NORDIC PAVILION, VENICE, 1962  
SCHNITT A.A, MASSSTAB 1:100

Nathalie Feile, Hanna Maier, Anna Merk, Luis Schönemann, Frederik  
Wulfrath



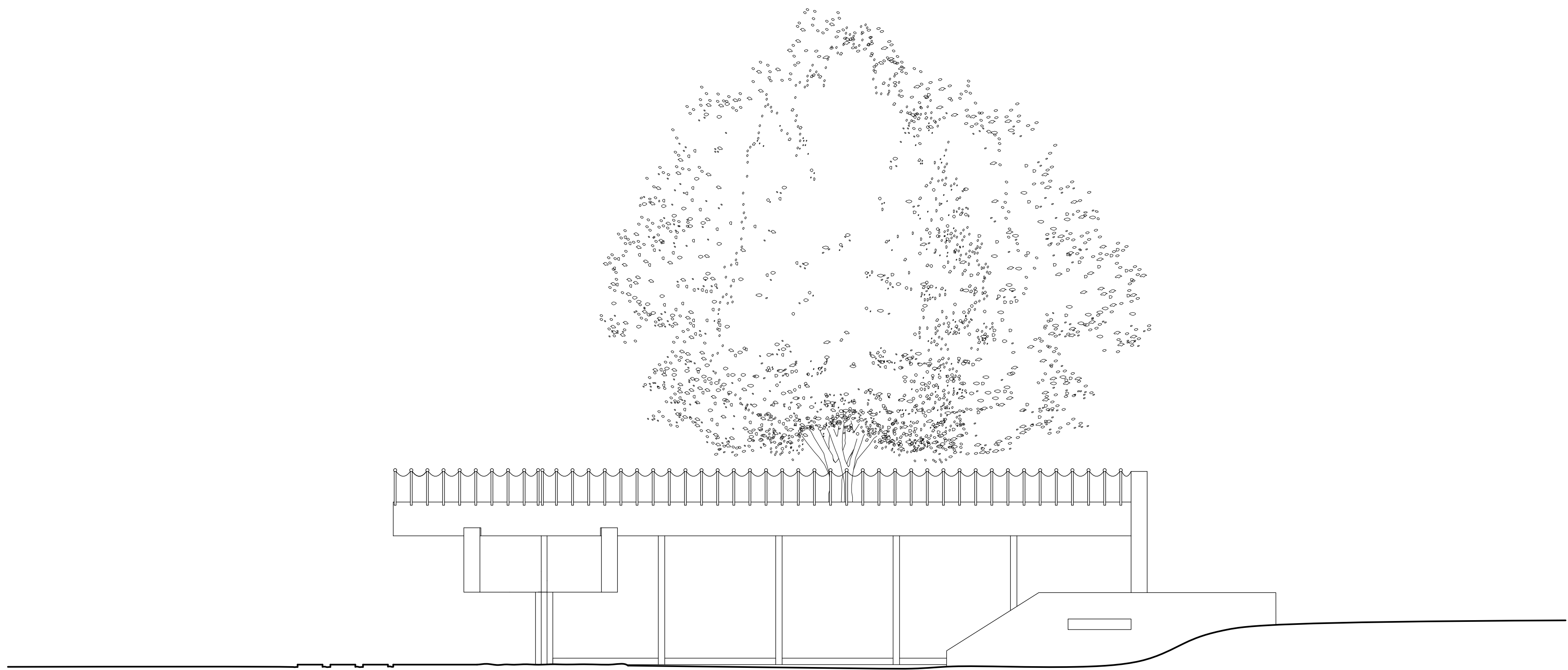
SVERRE FEHRN, NORDIC PAVILION, VENICE, 1962  
SCHNITT B.B, MASSSTAB 1:100

Nathalie Feile, Hanna Maier, Anna Merk, Luis Schönemann, Frederik  
Wulfrath



SVERRE FEHRN, NORDIC PAVILION, VENICE, 1962  
ANSICHT NORD-WEST, MASSSTAB 1:100

Nathalie Feile, Hanna Maier, Anna Merk, Luis Schönemann, Frederik  
Wulfrath



SVERRE FEHRN, NORDIC PAVILION, VENICE, 1962  
ANSICHT NORD-OST, MASSSTAB 1:100

Nathalie Feile, Hanna Maier, Anna Merk, Luis Schönemann, Frederik  
Wulfrath